

V2I Station

C-ITS ROAD SIDE UNIT - OUTDOOR



V2X AND C-V2X RADIO COMMUNICATION WITH CONNECTED VEHICLES

HAZARDS NOTIFICATIONS

ROADWORKS MANAGEMENT

CONNECTED TRAFFIC LIGHTS

TRAVEL TIME COMPUTATION

AVAILABLE IN EUROPEAN AND US VERSION

V2I Station

C-ITS ROAD SIDE UNIT - OUTDOOR

LACROIX's V2I station is an interoperable and cybersecure solution to connect infrastructure and vehicles.. The V2I Station operates on 5.8 / 5.9GHz bands according to US or European standards (WAVE 1609 / EN 302 571). The unit is designed to ensure permanent and rugged use along the roads, while ensuring technological scalability.

A wide range of interfaces is available to communicate with sensors for advanced vehicle perception and existing traffic lights.

The embedded software includes a Web HMI and API, as well as all application / communication stacks required to communicate with the vehicles and the traffic management centers.

Delivered with a Bluetooth traffic sensor, the unit can be used to measure travel times, detect traffic jams or determine Origins / Destinations.



BENEFITS

- Reduced risks of accidents
- Improved quality of services for road users
- Less traffic congestion
- Time savings during commissioning and maintenance
- Cybersecure data exchanges
- Interoperable solution that fully interfaces with existing systems.

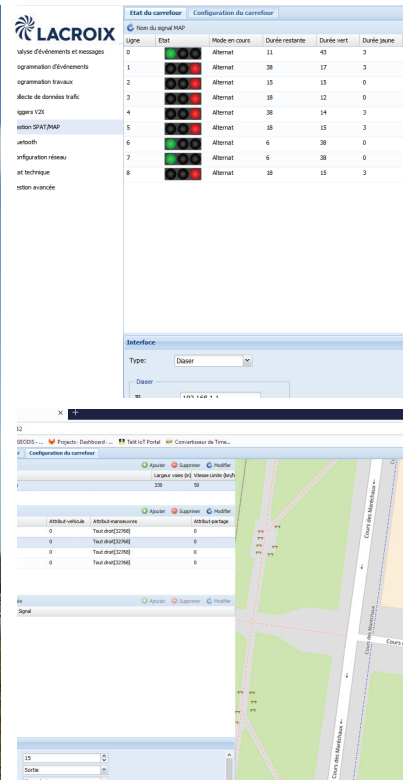
APPLICATION

- Connected Highways
- Dynamic Lighting
- Automated Intersection Crossing
- Roadworks warning
- Connected VMS

FONCTIONS

- Traffic light priority
- Hazardous locations notifications
- Bluetooth travel time
- V2X vehicles data agregation

COOPERATIVE APPLICATIONS VEHICLE-INFRASTRUCTURE



TECHNICAL CHARACTERISTICS

- Dimensions: 10,6 x 11,8 x 2,7 in (270 x 270 x 62 mm)
- Weight : 3,30 lbs
- Temperatures : -58°F / +158°F (-40°C / +70°C)
- IP67

POWER

- Consumption : 6W
- PoE 802.3af / 12V-48V DC

ANTENNAS

- V2X x2 omnidirectional 5.8Ghz 7dBi
- Bluetooth omnidirectional 3dBi
- Integrated GPS / Cellular Antennas
- Connector V2X type N
- V2X Directional Antenna (option)

INTERFACES

- V2X and C-V2X
- Bluetooth
- GNSS
- Ethernet
- 3G/4G
- I / O extension module (option)